



Installation Instructions:
Detachable Fairing:
Triumph Thunderbird

Wiring Harness:

***These instructions cover a few different harnesses so some information may not pertain to your installation*

- 1) Remove seat and disconnect battery.



- 2) Remove rear tank bolt and place roll of electrical tape under tab to lift

- 3) Route wire loom(s) through Top tree on left side by handlebars/clamp, then through frame grommet. Feed through Leaving approximately 6" sticking out from tree. Route behind front tank mount, above fuel crossover and under remainder of tank. **Make sure loom does interfere with any existing wiring or come in contact with motor or exhaust. If there are any additional wires or lines route them along the same path.*



Wiring

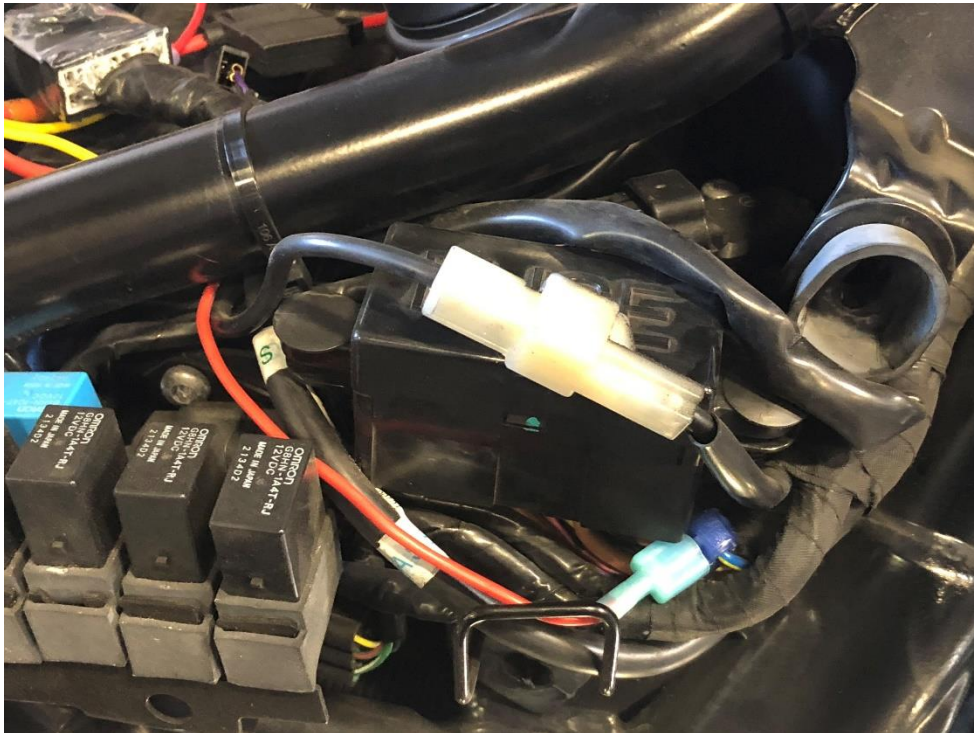
- 4) Harness(s) should exit near battery. Attach wires per guide.



Standard radio: Yellow 16ga- Attach fuse holder and connect to **Positive** battery terminal
Black 16ga- **Negative** battery terminal
Red 16ga- Locate the **16 ga BLUE wire w/Yellow stripe** in one of the factory wire bundles. Attach the supplied (yellow) T-tap connector to the wire. Crimp male spade to wire and attach to the yellow T-tap

GPS: Red 12ga- Attach fuse holder and connect to **Positive** battery terminal.
Black 12ga- **Negative** battery terminal
Blue 16ga- Locate the **16 ga BLUE wire w/Yellow stripe** in one of the factory wire bundles. Attach the supplied (yellow) T-tap connector to the wire. Crimp male spade to wire and attach to the yellow T-tap

Amp: Red 12ga- Attach fuse holder and connect to positive battery terminal
Black 12ga- negative battery terminal.



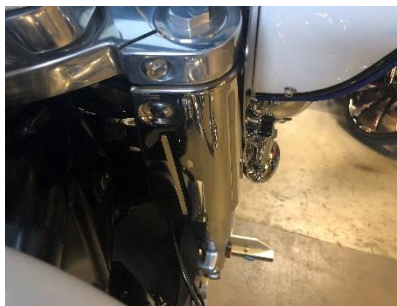
1) Remove top and bottom windshield mounting bolts. Remove Billet grommets.



2) Slide fairing onto OEM Windshield Inner grommets. Plug in all connections at this point.



2) Install the 4 Included Stainless-Steel Hex Socket Screws and Washers in the 4 existing windshield mounting holes. Ensure that there is nothing making contact with fairing.



- 3) Install fuses, check operation and reinstall seat if everything is functioning correctly.

- 4) Install windshield if you have not done so already. You may need to loosen the three screws to ease sliding windshield into position. Ensure that windshield is even at both ends. Once it is completely seated tighten the three screws.