



**Installation Instructions:
Detachable Fairing:
Switchback**

Tools Needed:

<input type="checkbox"/> 1/2 inch Socket	<input type="checkbox"/> Wire Cutters
<input type="checkbox"/> 7/16 inch Socket	<input type="checkbox"/> Wire Strippers
<input type="checkbox"/> 10 mm Socket	<input type="checkbox"/> Phillips Screwdriver
<input type="checkbox"/> 1/2 inch Ratchet Wrench	<input type="checkbox"/> T25 Torx driver
<input type="checkbox"/> 1/4 inch Allen Wrench	<input type="checkbox"/> T40 Torx Driver
<input type="checkbox"/> 3/16 inch Allen Wrench	





cover fuel tank and front fender to prevent scratches during install -
remove seat and set aside



- remove access to battery and disconnect terminals negative first



- Trace turn signal wires to frame, remove rubber grommet and pull out connector. Mark Left or Right on appropriate connectors, and disconnect. Carefully pull signal wires through wiring loom.
- 1/4 inch Allen wrench remove set screw for signal at back of mount. Using 3/16 Allen wrench, inside bolt and remove light and attachments. Leaving the mount on the handlebars



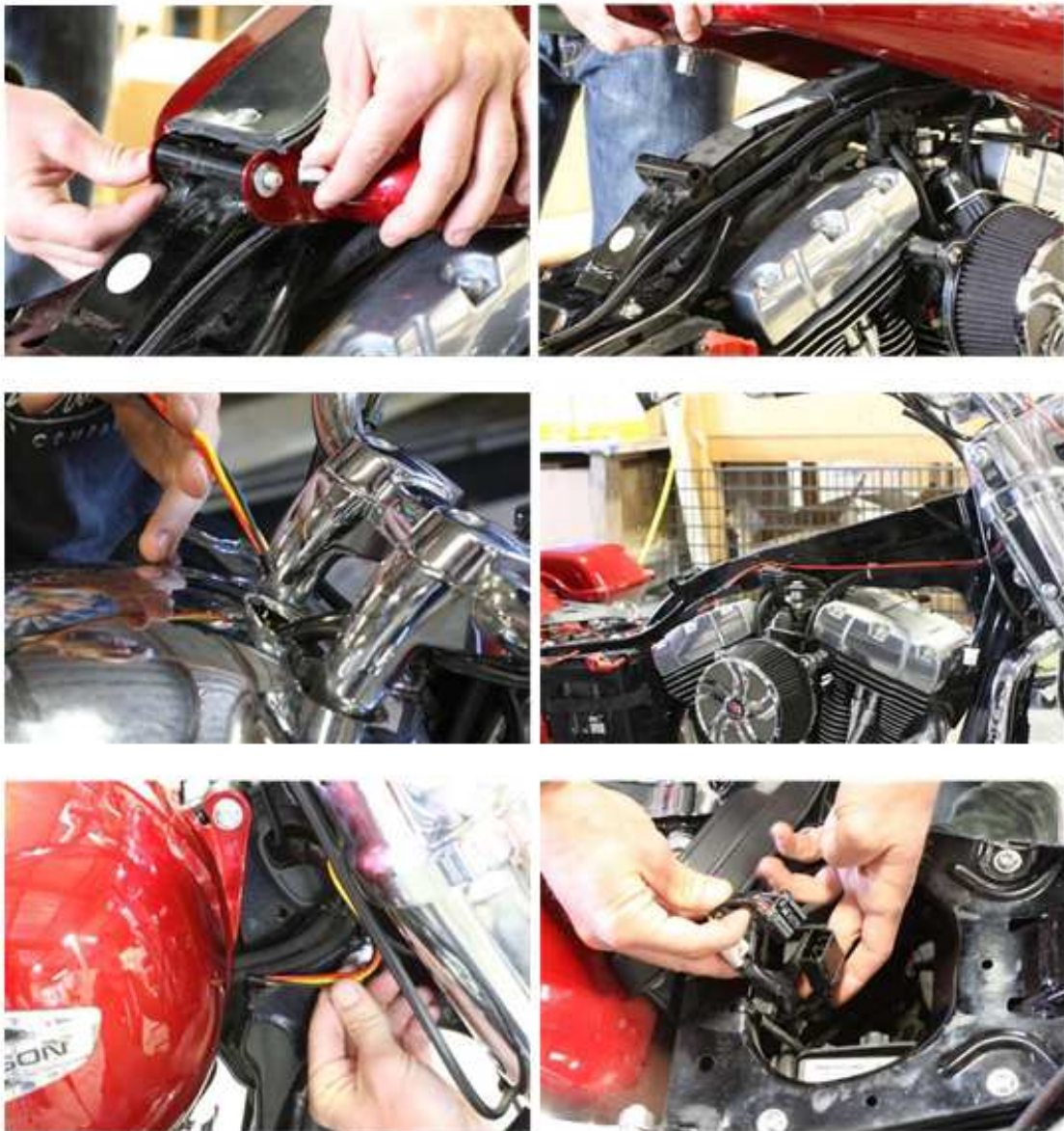
- Install turn signal switch with supplied Allen button screws with quarter inch spacer on signal side.



- Using T-40 Torx, remove upper windshield mounting bolts
- Remove rubber grommet and replace with (2) 5/16 supplied washers per side.



- For best appearance, purchase Harley Davidson light extension part # 69627-99 and Install.



- Using quick disconnect wiring harness supplied, start wire loom through headlight nacelle on right side by handlebars & clamp cover then through frame grommet.
- Leaving 6" of harness on front end, feed harness behind front tank mount and behind fuel crossover tube.
- Feed under tank, making sure not to interfere with any existing wiring or touching motor. Replace tank and bolt into place.
- If installing the USB, Ipod extension cord or amp cord, it will follow the same path as harness from front to bike back to the battery area.



- Connect RED wire to ACC wire.
- Reconnect battery putting black wire on ground terminal and YELLOW wire through fuse on positive terminal
- Install supplied fuse

Attaching the fairing:



- Align bottom slots on bracket with bottom windshield bolts. -
- Connect both ends of radio harness.
- Tighten top windshield mount bolts.



- Thread turn signal light through as shown.
- Connect turn signal wires to original connections. -
- Zip tie extra wire and tuck away as shown.