



Amp & Speaker Upgrade (After Market Radio) Install Instructions for Batwing Fairing

Tools Needed:

- 1/2 inch Socket
- 7/16 inch Socket
- 10 mm Socket
- 1/2 inch Ratchet Wrench
- Wire Cutters
- Wire Strippers
- Phillips Screwdriver
- T25 Torx driver

Installation steps:



- Cover tank and fenders to avoid scratches during this process



- Remove seat rest and seat, and set aside



- Remove access cover to battery
- Disconnect battery negative terminal first



- Remove gas tank bolts and disconnect fuel lines. -
Remove tank and set aside



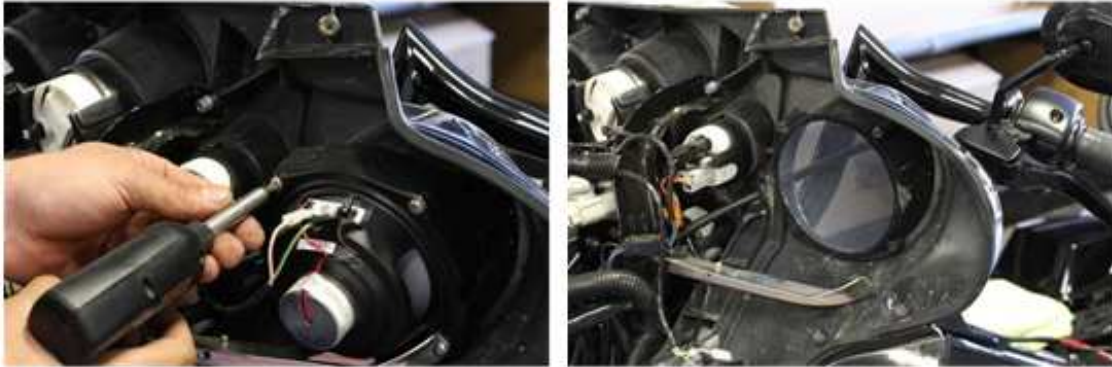
- Remove wiring conduit cover



- Remove 2 torx screws from backside of fairing near forks, then two torx screws below speaker opening, then remove 3 screws at windshield area
- Remove fairing and unplug headlight



- Pull the supplied wiring harness from battery through the loom in fairing
- Fasten in harness to existing wires in conduit with zip ties cut excess from the ties



- Remove existing speakers with Torx T25 driver
- If you're changing speaker grills do so now (optional, shown on right)



- Install Dragonfly 6.5 speaker adapter with (6) 3/4 inch phillip screws -
- Install new speakers with supplied zinc screws
- Install your speakers using the screws that came with them
- Start with outside bottom screw going through speaker reinforcement bracket -
- Start all 3 screws before tightening any; speaker adapter can sometimes flex when tightening to fairing



- If you have CB or intercom modules remove them now and relocate to bottom side of radio

2 Channel Amp Instructions (if applicable):
- No Gauge Modifications Needed



- Install 2 layers of double back tape on front and rear edge of radio



- Connect amplifier power connections
- Connect supplied blue turn-on wire from amp to orange and white accessory wire at headlight loom
- Make sure all amplifier adjustments are accessible when mounted
- Mount amplifier on top of radio using supplied double sided tape.
- Connect speaker wires to speaker outputs from amplifier

4 Channel Amp Instructions (if applicable):
- Minor Gauge Modifications Needed



- Remove harness loom, carefully using razor blade to cut electrical tape -
Remove speedometer and tachometer



- Using air saw trimmer, cut as shown creating flat spacer ring and having to mounting tabs (the shoulder of the mounting tabs may need to be trimmed for proper tolerance)



- Before installing gauges run zip ties to top of radio rubber grommet holes -
Using zip ties, from previous step - secure factory wire loom



- Re-install gauges making sure index points on gauges are properly oriented -
Install gauges with modified mounting tabs oriented upwards.



- Install 2 layers of double back tape on front edge of radio -
- Ensure front foot tabs are cut off of amplifier



- Using supplied double back tape secure amplifier on top of radio



- Put zip ties around harness to attach mounting tabs on back of amplifier.
- Place the amp on top of radio and secure with zip ties in mounting tabs.
- Connect RCA's from radio to amplifier.
- Remove excess from zip ties.
- Connect power wires to amplifier.
- Connect supplied blue turn on wire from amp to orange and white accessory wire on headlight loom.
- ***If installing lower fairing speakers or rear speakers, connect the wires to amp now using supplied speaker wiring harnesses.***

Lower Fairing Installation (if applicable):



- Remove glove box doors from lower fairings
- Drill hole for speaker wire just below crash bar



- Run supplied speaker wire from inside of lower fairing cup along bottom side of crash bar to center



- Pre-drill holes for speakers using speaker ring and 5/64 inch drill bit -
- Tabs for glove box may need to be trimmed to fit speakers



- If installing crossover networks, do so now with supplied double sided tape



- Attach speaker wires to speakers
 - Attach speakers and trim ring to lower fairing with supplied screws from speakers
 - Fit speaker grill to inside rim of speaker as shown
- * Note: put a spot of silicone or hot glue in four spots on grills to make sure they are secure.

Rear Speaker Installation (if applicable):



- Locate and cut these wires and connect to amp with supplied connectors
 - Left Rear: (+) Brown, (-) White with Brown tracer
 - Right Rear: (+) Green, (-) Light Green with Brown tracer -
- Using T10 Torx driver, remove existing speakers



- Disconnect speaker wires and remove stock speakers -
- Pre-drill new speaker holes using speaker rings



- attach speakers with supplied speaker screws



- reconnect battery putting black wire on ground terminal and red wire through fuse on positive terminal
- install supplied fuse
- Reinstall all parts opposite removal

Important Final Steps:

Make sure your Bass and Treble are at middle setting on radio and AVC - AUTOMATIC VOLUME CONTROL is set to the OFF position.

Amp Tuning: Locate crossover switch and select to "High" then rotate dial to approximately 110 Hertz. Put in a CD or other music device and play a song. Turn stereo all the way up to max and back one notch. At this time adjust gains equally up until you are able to make music as loud as possible without distortion. Your Tuned!

Warning: Keep in mind any speaker can be blown by simply playing distortion through it at too high volume. Some songs will distort before others due to recording quality and recording levels. If you hear distortion through your speakers simply turn the radio down a notch or two.



Amp & Speaker Upgrade Install Instructions for Road Glide

Tools Needed:

- 1/2 inch Socket
- 7/16 inch Socket
- 10 mm Socket
- 1/2 inch Ratchet Wrench
- Wire Cutters
- Wire Strippers
- Phillips Screwdriver
- T25 Torx driver

Installation steps:

-Cover tank and fenders to avoid scratches during the process





-Remove seat



-Remove access cover to battery



-Remove tank bolts and disconnect fuel lines -
Cover tank and set aside



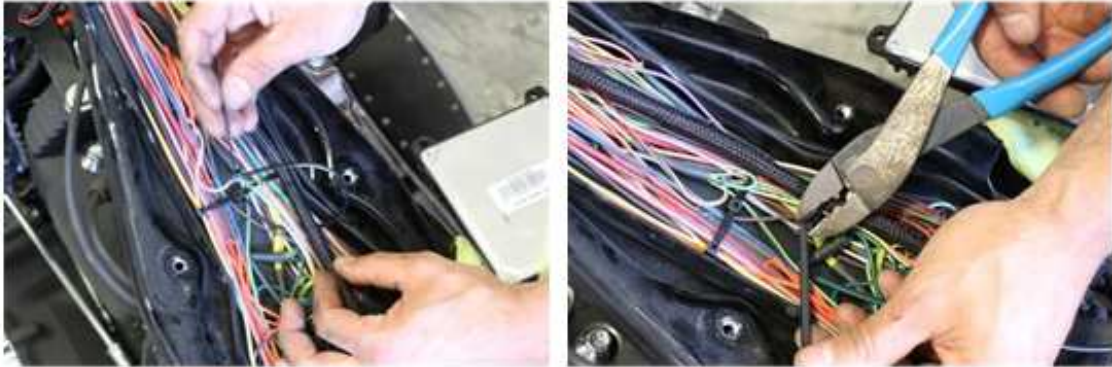
- Remove wiring conduit cover



-Remove six inner fairing screws
-Remove signal lights



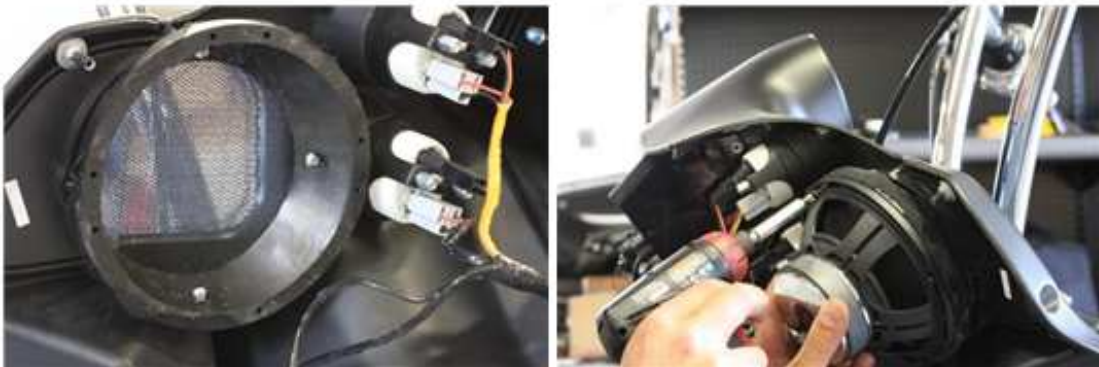
-Pull outer fairing from inner fairing and disconnect headlight connectors -
Cover outer fairing and set aside



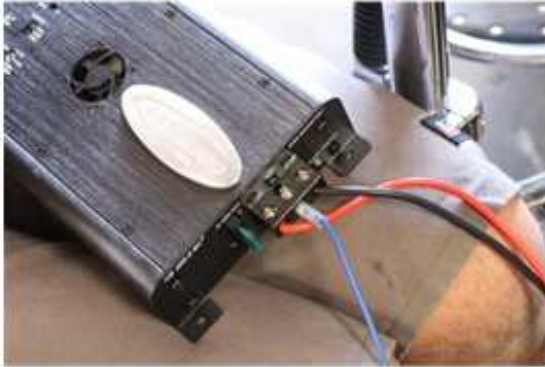
- Pull supplied amplifier wire harness from battery through to loom in fairing
- Fasten harness to existing wires in conduit with zip ties, cut excess from zip ties.



- Remove existing speakers with Philips screwdriver - If you're changing speaker grills, do so now.
- Remove old grills and install new ones using same screws and hardware



- Install dragonfly 6.5 inch speaker adapter with large portion of ring facing in -
- Install new speakers with provided screws orientate tweeters towards rider before mounting



- Connect amplifier power connections
- Connect supplied blue turn-on wire from amp to orange and white accessory wire at headlight loom



- Make sure all amplifier adjustments are accessible when mounted
- Mount amplifier on inner wall using supplied double sided tape.



- Connect speaker wires to speaker outputs from amplifier



- Hook up RCA's to supplied line level converter & amplifier.
- Locate existing speaker wires from radio; White with orange tracer (left) and grey with red tracer (right). Cut spade connectors and replace with supplied connectors.
- Connect to line level converter.
- Using supplied double back tape affix line level converter to side of radio mount



- Reconnect battery putting black wire on ground terminal and red wire through fuse on positive terminal
- Install supplied fuse

Final Steps:

Make sure your bass and treble are at middle setting on radio and AVC - AUTOMATIC VOLUME CONTROL is set to the OFF position.

Amp Tuning: Locate crossover and select to "High" then rotate dial to approximately 110 Hertz. Put in a CD or other music device and play a song. Turn stereo all the way up to max and back one notch. At this time adjust gains equally up until you are able to make music as loud as possible without distortion. Your Tuned!

Warning: Keep in mind any speaker can be blown by simply playing distortion through it at too high volume. Some songs will distort before others due to recording quality and recording levels. If you hear distortion through your speakers simply turn the radio down a notch or two.