



**2013 Road King CVO FLHRSE5  
Detachable Fairing w/ Garmin Zumo 665  
Installation Instructions**

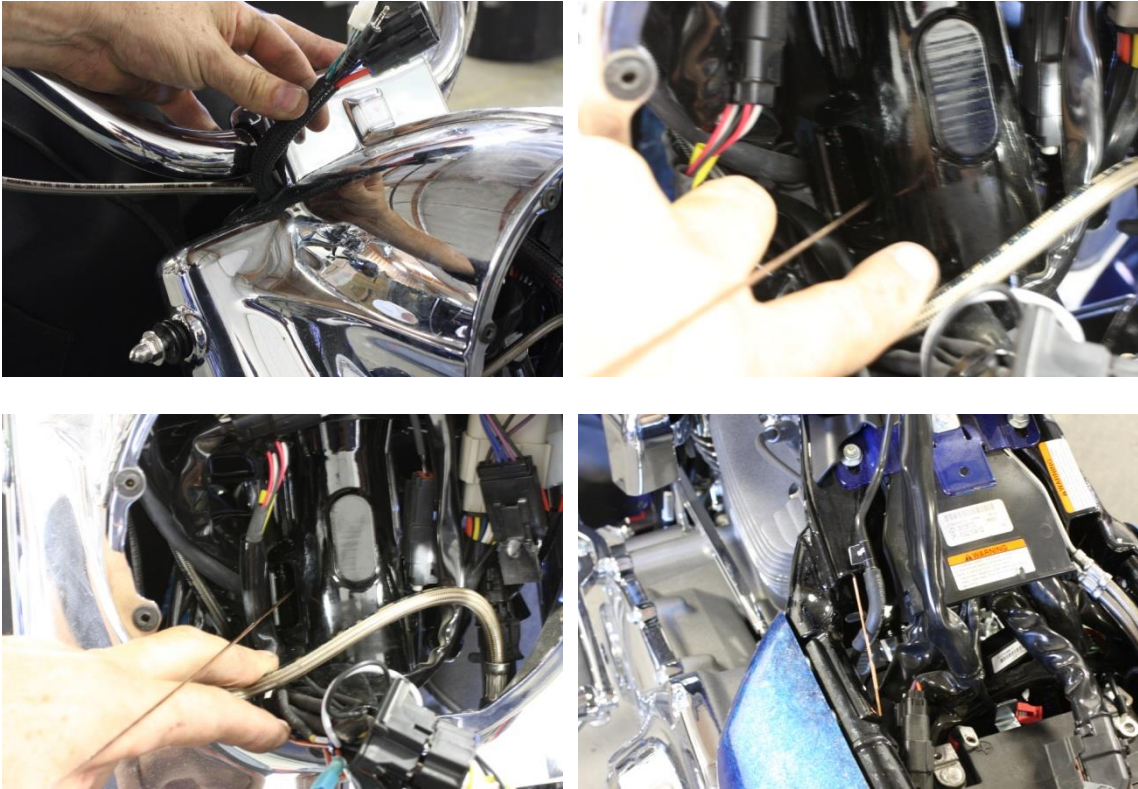




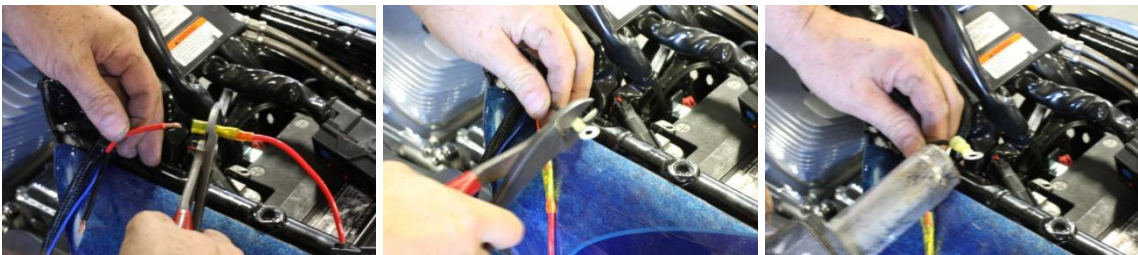
1. Turn ignition switch to on position and leave there. This will prevent alarm from going off when you disconnect the battery.
2. Remove chrome seat nuts
3. Remove ECM tray. Move ECM tray to the side
4. Disconnect negative battery cable, followed by disconnecting positive cable



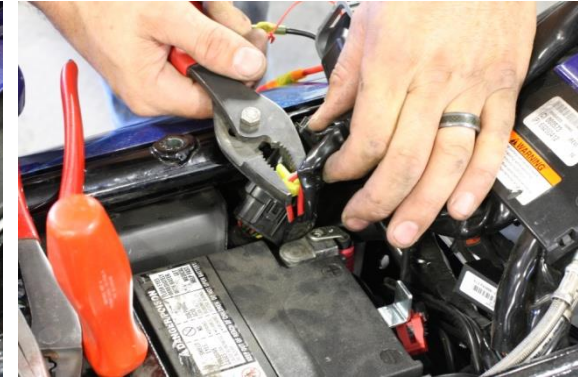
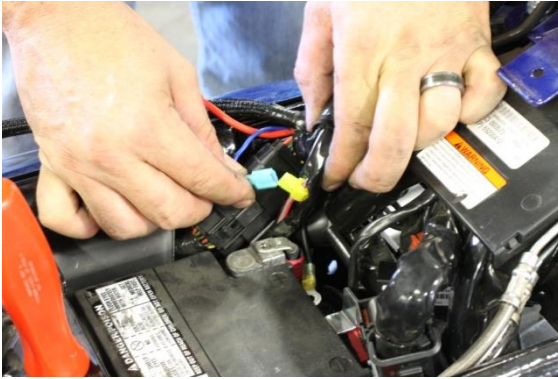
5. Remove headlight cover screw, then remove headlight screws
6. Disconnect both headlight connections



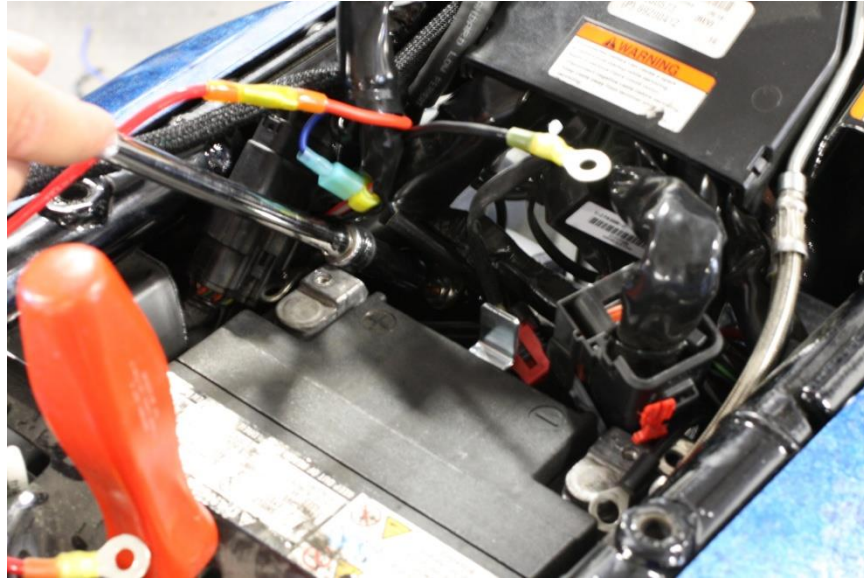
7. Run wiring harness through handlebar clamp to headlight cover. Pull through leaving pigtail sticking up 4-5 inches at top.
8. Attach wiring harness with tape to tig wire, wire hanger, or similar to fish through frame. Tape all branched ends to harness to pull through.
9. Run wiring harness through throttle side of bike at neck, should come out clutch side at battery. Make sure to leave enough slack for handlebars to move freely in both directions.



10. Attach fuse holder to red power wire. Eyelet to black ground wire. Use heat gun to heat shrink connections to ensure a tight seal.



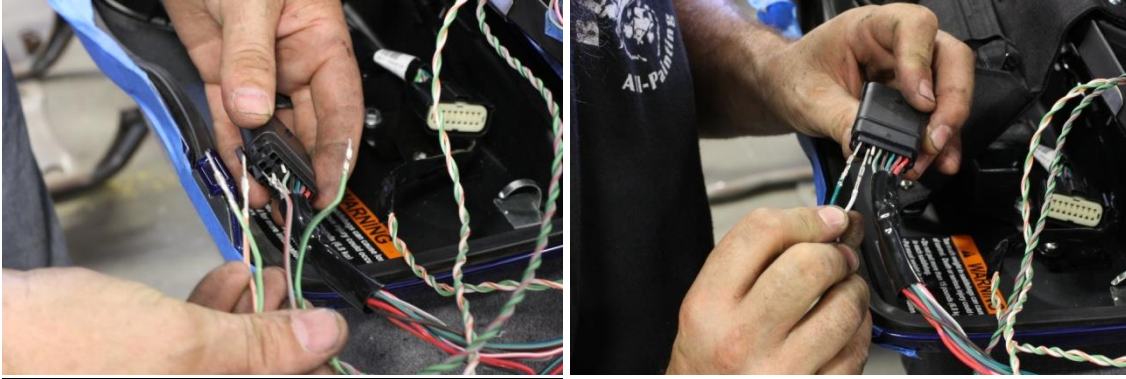
11. Carefully open factory wiring loom coming from dash and locate red wire with grey stripe.
12. Attach yellow t-splice to red wire with grey stripe. Ensure clamps are completely closed.
13. Attach blue male spade connector to blue wire coming from wiring harness. Attach spade connector to tap going into red wire with grey stripe.



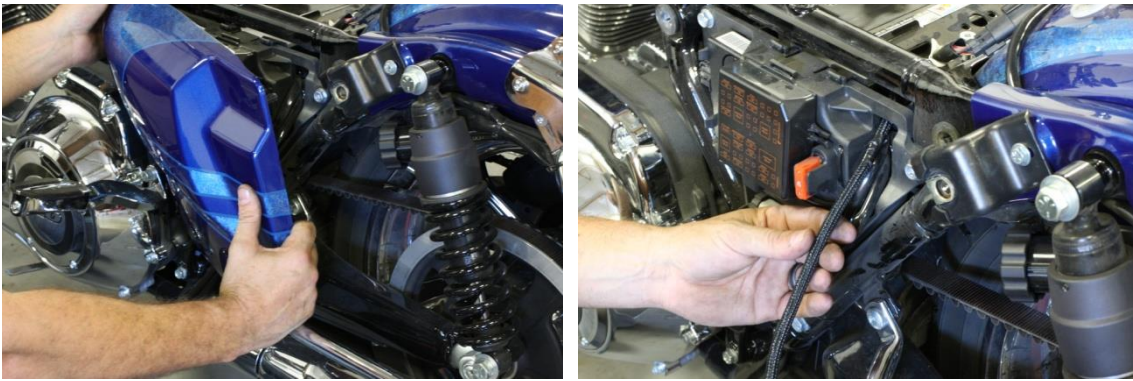
14. Connect ground wire to grounding stud on frame.
15. Reattach positive battery cable including fuse holder from wiring harness.



16. Remove fasteners from left saddlebag and separate enough to disconnect plug.  
Move saddlebag to a workspace.



17. AT AUDIO MODULE:De-pin OEM wires; 7-LT SPKR Out (+), 8-LT SPKR Out (-), 15-RT SPKR Out (+), and 16-RT SPKR Out (-).See wiring diagram on page 13
18. Replace with corresponding colored wires from Dragonfly wiring harness.



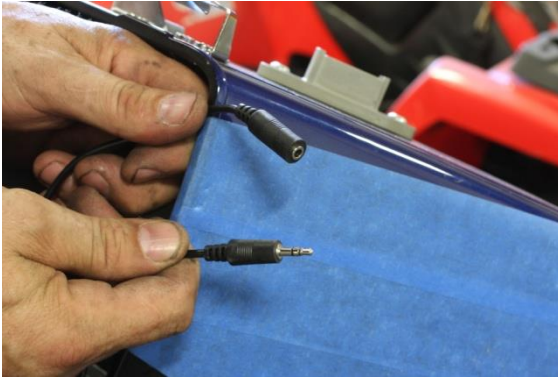
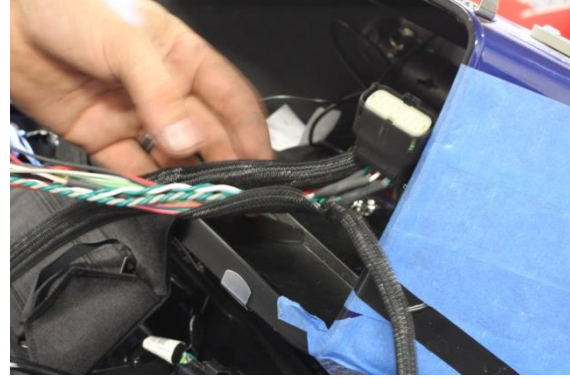
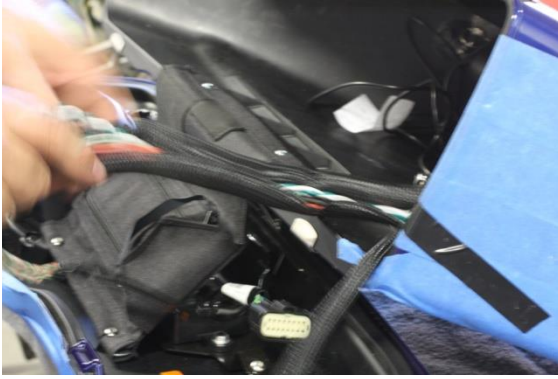
19. Remove left hand side cover.
20. Pull speaker wiring harness through frame, exiting near fuse panel.



21. Drill two holes on inside of saddlebag the side coming out near fuse panel. Drill size 21/64 for audio plug, and 3/8 for speaker wire grommet. Secure pass through with silicone or epoxy.



22. Remove amplifier with T25
23. Cut factory loom between module and amplifier.
24. De-pin wires; 12-LT SPKR In (+), 13-LT SPKR In (-), 9-RT SPKR In (+), and 10-RT SPKR In (-). See wiring diagram on page 13
25. Re-pin factory connectors with Dragonfly splice in harness.

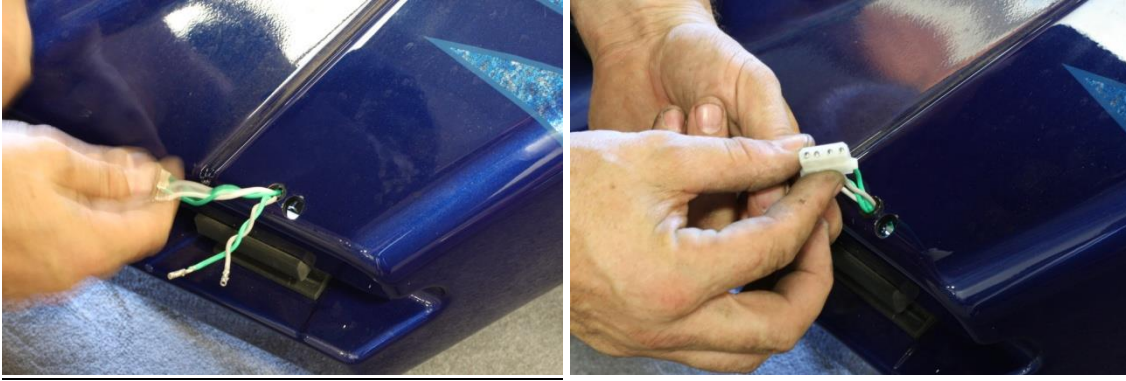


26. Install supplied loom at this time. Loom should cover from amp plug to audio module.
27. Take audio cable that has 3.5 mm male and female ends, plug male end into MP3 player pouch. Run wire through existing 3.5 mm wire path. Run this wire through loom.
28. Tape ends of loom so that it does not come loose.

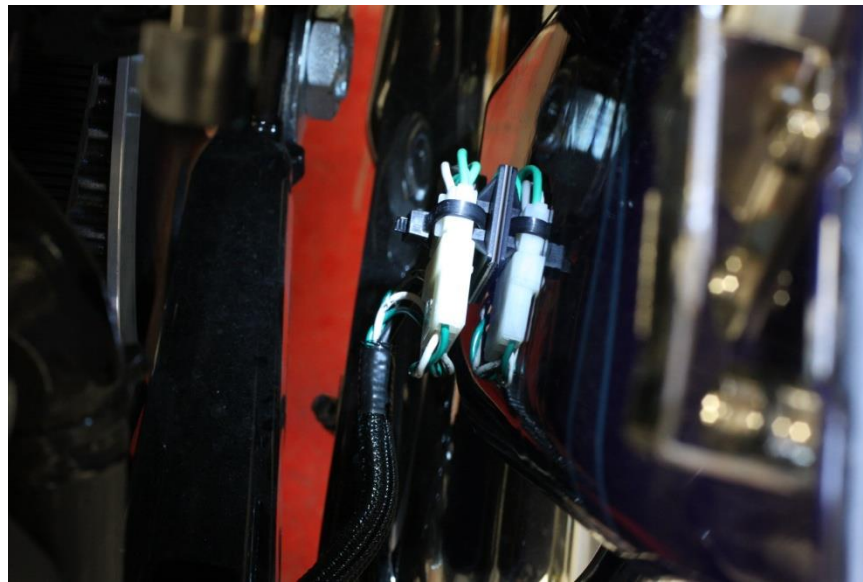




29. Route audio wire through OEM path utilizing OEM connectors.
30. Reconnect amplifier and reinstall. Ensure all wiring is routed in same position as it was prior to removal.
31. Reattach amp to mount using new double back tape if necessary. Existing tape may no longer be good.
32. Attach anchor mounts to bottom interior of saddlebag and secure wiring



33. Push audio wires through hole drilled earlier. Put speaker wires through saddlebag, then grommet, then silicon grommet into place. Ensure that matched wire pairs are kept together.
34. Install supplied quick disconnect to speaker wires. Female connectors are installed into female plug.
35. Push 3.5 mm jack through other hole in saddlebag and secure using silicon or epoxy.
36. Attach the mating quick-disconnect coupling to harness at motorcycle side. Ensure wires are matched and paired. Dielectric grease should be applied to quick disconnect fittings to accommodate for wet weather conditions.



37. Rest saddlebag on motorcycle and reconnect wiring harnesses and connectors
38. Install anchor mount to keep wiring secure
39. Fasten saddlebag to motorcycle.



40. Remove upper anchor nut and stud using vice grips if necessary.
41. Replace stud with fairing lock using two zinc washers and one chrome washer at outside.
42. Reconnect headlight connections, and assemble headlight. For best esthetic, we recommend using a headlight trim extension (OEM part # 69627-99)
43. Install fairing by placing bottom of bracket securely on lower grommets.
44. Connect the quick disconnect fittings making sure they are locked in.
45. Separate the two zinc washers on each of the fairing lock bolts using a flat screwdriver or blade. Slide fairing bracket into place, splitting the two zinc washers.
46. Ensure fairing is aligned and in place, then tighten fairing locks with supplied socket.

# Wiring Diagram

